

Prison Hinges

DESCRIPTION:

Prison hinges are heavy weight for the detention environment. They are constructed for high abuse areas.

APPLICATIONS:

No. 5 Hinge: Use on cell or corridor doors, security vestibule doors, and primary entrances. Also suitable for armories or drug storage areas, or access panels in high abuse situations.

No. 3 Hinge: Use on moderate size doors, such as food-pass doors, control or key cabinet doors, and window grilles.

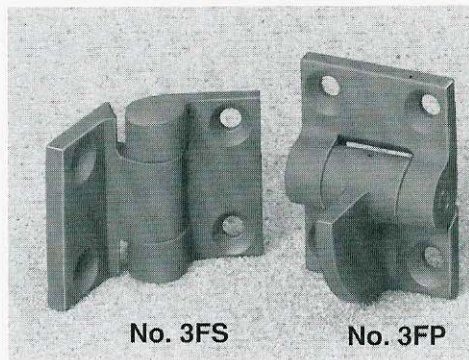
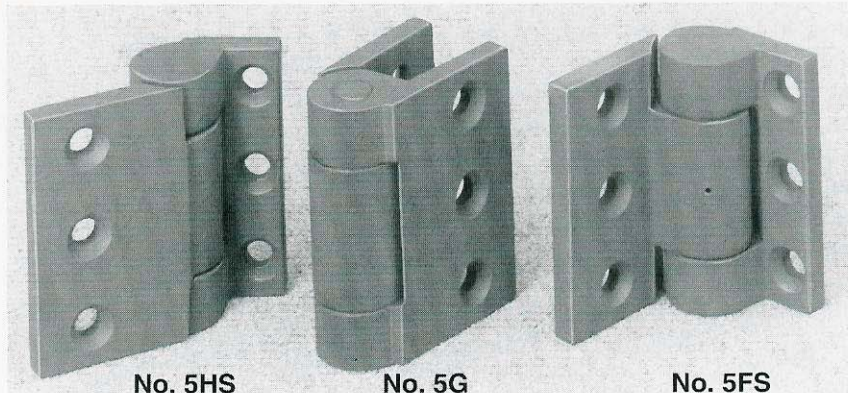
STANDARD FEATURES:

No. 5

- **Drop-forged steel leaves**—1/2" thick.
- **Two thrust bearings**—With 1/4" hardened steel ball bearings and races.
- **Knurled, hardened hinge pin**—3/4" diameter steel, pressed into a blind hole. Tamper-resistant.
- **Non-handed**—Reversible.
- **Oil hole**—In barrel of male leaf.
- **Mounting screws**—Provided with six 1/2"-13 x 7/8" flat head steel security screws.
- **Finish**—USP Primed.

No. 3

- **Cast, malleable-iron leaves**—3/8" thick.
- **Knurled, hardened hinge pin**—3/8" diameter, pressed into a blind hole.
- **Non-handed**—Reversible.
- **Oil hole**—In barrel of male leaf.



- **Mounting screws**—Provided with four 3/8"-16 x 3/4" flat head steel security screws.
- **Finish**—USP primed.

OPTIONAL FEATURES:

No. 5 only

- **Welded application**—May be ordered without holes for welding.
- **May be ordered by specifying screw hole locations**—Refer to template.
- **Welded pin construction**—Meets some state requirements.

No. 3 and No. 5

- **Finish**—Galvanized.

MODELS AVAILABLE:

- No. 5FS**—Full-surface hinge for hollow metal or steel plate doors.
- No. 5HS**—Half-surface hinge for grille doors in heavy steel frames.
- No. 5G**—Gap-type hinge for grille doors in grille frame.
- No. 3FS**—Full-surface hinge for access doors/panels.
- No. 3FP**—Food-pass door hinge.



Santa Beatriz No. 3722,
Col. Jardines de San Ignacio,
Zapopan 45040, Jal.
Tel. (33) 3121 7878
Fax (33) 3121 9131
www.alsemexicana.com

Dakota No. 69 esq. Galveston,
Col. Nápoles,
México 03810, D.F.
Tel. (55) 5543-1938
Fax (55) 5543-2835
info@alsemexicana.com

Lada sin costo: 01-800-001ALSE
(2573)

LOAD BEARING DATA:

No. 5 Hinge

2 hinges: 500 lbs. with screws attached to door and frame.

3 hinges: 750 lbs. with screws attached to door and frame.

2 hinges: 1,000 lbs. welded attachment to door and frame.

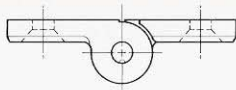
3 hinges: 2,000 lbs. welded attachment to door and frame.

No. 3 Hinge

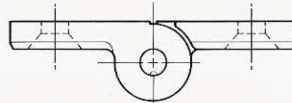
2 hinges: 150 lb. with screws attached to door and frame.

DIMENSIONAL DATA:

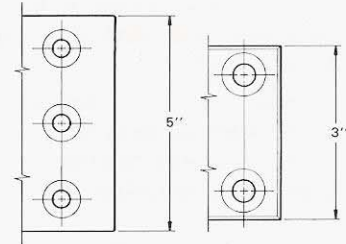
Model	Description	Height	Width	Weight (lbs.)
5FS	Full-surface hinge	5"	5-1/4"	6
5HS	Half-surface hinge	5"	5-1/4" open	6
5G	Gap-type hinge	5"	6-1/2" open	6
3FS	Full-surface hinge	3"	4"	4
3FP	Food pass hinge	3"	4"	4



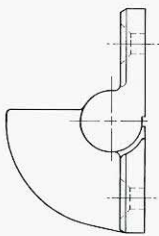
No. 3 Full surface



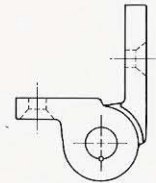
No. 5 Full surface



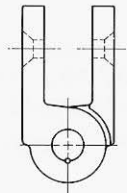
No. 5 Series No. 3 Series



No. 3 Food pass



No. 5 Half surface



No. 5 Gap

NOTE: Dimensions are for general information and planning purposes only, and should not be used as templates.



Santa Beatriz No. 3722,
Col. Jardines de San Ignacio,
Zapopan 45040, Jal.
Tel. (33) 3121 7878
Fax (33) 3121 9131
www.alsemexicana.com

Dakota No. 69 esq. Galveston,
Col. Nápoles,
México 03810, D.F.
Tel. (55) 5543-1938
Fax (55) 5543-2835
info@alsemexicana.com

Lada sin costo: 01-800-001ALSE
(2573)